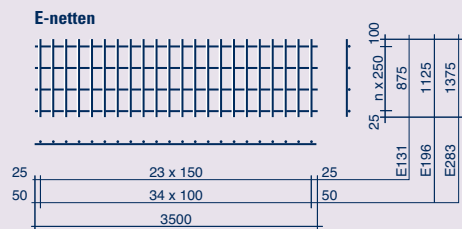


# betonstaal

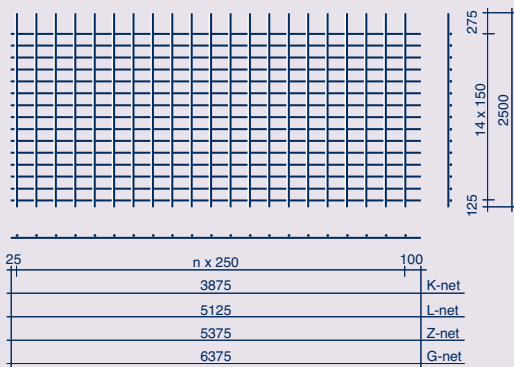
## netten

leveringsvoorwaarden: NEN 6008

toleranties: NEN 6008

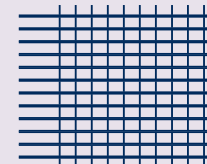


## K-L-G-Z-netten



# E-netten

## K-L-G-Z-netten



| merk | A<br>mm <sup>2</sup> /m | G <sub>8</sub><br>kg/net | hoofdwap.<br>mm | verdeelwap.<br>mm | ℓ<br>mm | b<br>mm |
|------|-------------------------|--------------------------|-----------------|-------------------|---------|---------|
| E131 | 131                     | 5,39                     | 5 -150          | 5-250             | 3500    | 875     |
| E196 | 196                     | 8,76                     | 5 -100          | 5-250             | 3500    | 1125    |
| E283 | 283                     | 13,9                     | 6 -100          | 5-250             | 3500    | 1375    |
| K189 | 189                     | 19,1                     | 6 -150          | 5-250             | 3875    | 2500    |
| K257 | 257                     | 23,7                     | 7 -150          | 5-250             | 3875    | 2500    |
| K295 | 295                     | 26,3                     | 7,5 -150        | 5-250             | 3875    | 2500    |
| K335 | 335                     | 29,1                     | 8 -150          | 5-250             | 3875    | 2500    |
| K424 | 424                     | 36,5                     | 9 -150          | 5,5-250           | 3875    | 2500    |
| K524 | 524                     | 44,7                     | 10 -150         | 6-250             | 3875    | 2500    |
| K634 | 634                     | 53,8                     | 11 -150         | 6,5-250           | 3875    | 2500    |
| K754 | 754                     | 63,7                     | 12 -150         | 7-250             | 3875    | 2500    |
| L189 | 189                     | 25,2                     | 6 -150          | 5-250             | 5125    | 2500    |
| L295 | 295                     | 34,8                     | 7,7 -150        | 5-250             | 5125    | 2500    |
| L378 | 378                     | 42,3                     | 8,5 -150        | 5-250             | 5125    | 2500    |
| L524 | 524                     | 59,1                     | 10 -150         | 6-250             | 5125    | 2500    |
| L754 | 754                     | 84,1                     | 12 -150         | 7-250             | 5125    | 2500    |
| G295 | 295                     | 43,2                     | 7,5 -150        | 5-250             | 6375    | 2500    |
| G335 | 335                     | 47,8                     | 8 -150          | 5-250             | 6375    | 2500    |
| G424 | 424                     | 60,0                     | 9 -150          | 5,5-250           | 6375    | 2500    |
| G524 | 524                     | 73,4                     | 10 -150         | 6-250             | 6375    | 2500    |
| G754 | 754                     | 105                      | 12 -150         | 7-250             | 6375    | 2500    |
| Z257 | 257                     | 32,8                     | 7 -150          | 5-250             | 5375    | 2500    |
| Z335 | 335                     | 40,3                     | 8 -150          | 5-250             | 5375    | 2500    |
| Z424 | 424                     | 50,5                     | 9 -150          | 6-250             | 5375    | 2500    |

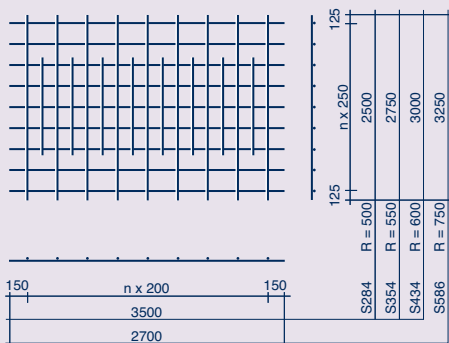
# betonstaal

## netten

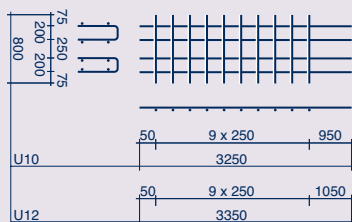
leveringsvoorwaarden: NEN 6008

toleranties: NEN 6008

### S-netten



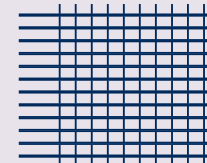
### U-netten



# S-netten

## U-netten

## P-netten



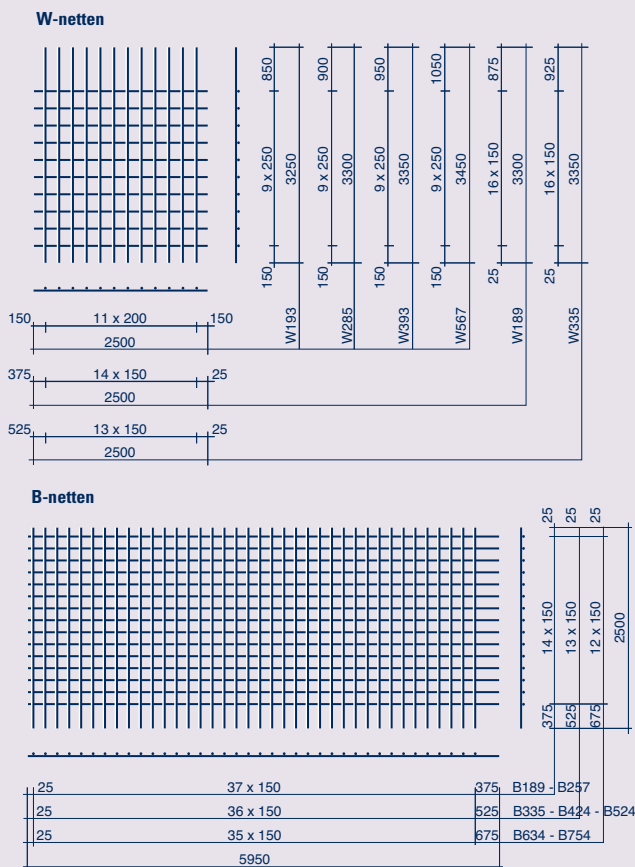
| merk | A mm <sup>2</sup> /m | G <sub>8</sub> kg/net | hoofdwap. mm | verdeelwap. mm | ℓ mm | b mm |
|------|----------------------|-----------------------|--------------|----------------|------|------|
| S284 | 284                  | 20,7                  | 8,5-200      | 5-250          | 3500 | 2500 |
| S354 | 354                  | 28,3                  | 10 -200      | 6-250          | 3500 | 2750 |
| S434 | 434                  | 28,8                  | 11 -200      | 6-250          | 3500 | 3000 |
| S566 | 566                  | 40,1                  | 12 -200      | 7-250          | 2700 | 3250 |
| U10  | 10                   | 9,8                   | 10 -200      | 6-250          | 3250 | 800  |
| U12  | 12                   | 14,3                  | 12 -200      | 7-250          | 3350 | 800  |
| P50  | 50                   | 22,2                  | 3 - 50       | 3- 50          | 5000 | 2000 |
| P79  | 79                   | 12,3                  | 5 -250       | 5-250          | 5000 | 2000 |
| P98  | 98                   | 15,4                  | 5 -200       | 5-200          | 5000 | 2000 |
| P131 | 131                  | 20,2                  | 5 -150       | 5-150          | 5000 | 2000 |
| P141 | 141                  | 22,2                  | 6 -200       | 6-200          | 5000 | 2000 |
| P189 | 189                  | 29,1                  | 6 -150       | 6-150          | 5000 | 2000 |
| P196 | 196                  | 30,8                  | 5 -100       | 5-100          | 5000 | 2000 |
| P251 | 251                  | 39,5                  | 8 -200       | 8-200          | 5000 | 2000 |
| P257 | 257                  | 39,6                  | 7 -150       | 7-150          | 5000 | 2000 |
| P262 | 262                  | 41,4                  | 5 - 75       | 5- 75          | 5000 | 2000 |
| P283 | 283                  | 44,4                  | 6 -100       | 6-100          | 5000 | 2000 |
| P335 | 335                  | 51,8                  | 8 -150       | 8-150          | 5000 | 2000 |
| P503 | 503                  | 79,0                  | 8 -100       | 8-100          | 5000 | 2000 |
| P524 | 524                  | 80,9                  | 10 -150      | 10-150         | 5000 | 2000 |
| P754 | 754                  | 116                   | 12 -150      | 12-150         | 5000 | 2000 |
| P784 | 784                  | 123                   | 10 -100      | 10-100         | 5000 | 2000 |

# betonstaal

## netten

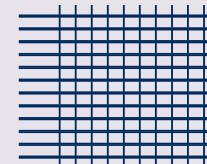
leveringsvoorwaarden: NEN 6008

toleranties: NEN 6008



# W-netten

## B-netten



| merk | A<br>mm <sup>2</sup> /m | G <sub>8</sub><br>kg/net | hoofdwap.<br>mm | verdeelwap.<br>mm | ℓ<br>mm | b<br>mm |
|------|-------------------------|--------------------------|-----------------|-------------------|---------|---------|
| W189 | 189                     | 20,4                     | 6-150           | 6-150             | 3300    | 2500    |
| W193 | 193                     | 15,6                     | 7-200           | 5-250             | 3250    | 2500    |
| W285 | 285                     | 21,5                     | 9-200           | 5-250             | 3300    | 2500    |
| W335 | 335                     | 35,3                     | 8-150           | 8-150             | 3350    | 2500    |
| W393 | 393                     | 30,4                     | 10-200          | 6-250             | 3350    | 2500    |
| W567 | 567                     | 44,3                     | 12-200          | 7-250             | 3450    | 2500    |
| B189 | 189                     | 40,9                     | 6-150           | 6-150             | 5950    | 2500    |
| B257 | 257                     | 55,6                     | 7-150           | 7-150             | 5950    | 2500    |
| B335 | 335                     | 69,4                     | 8-150           | 8-150             | 5950    | 2500    |
| B424 | 424                     | 87,7                     | 9-150           | 9-150             | 5950    | 2500    |
| B503 | 503                     | 105                      | 8-150           | 8-150             | 6000    | 2500    |
| B524 | 524                     | 108                      | 10-150          | 10-150            | 5950    | 2500    |
| B634 | 634                     | 125                      | 11-150          | 11-150            | 5950    | 2500    |
| B754 | 754                     | 149                      | 12-150          | 12-150            | 5950    | 2500    |

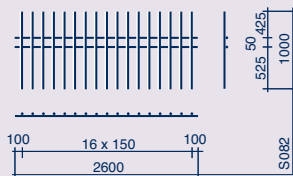
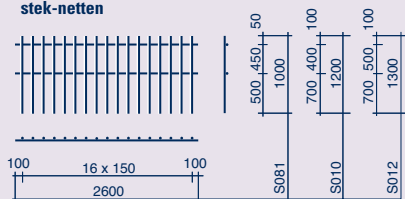
## betonstaal

### netten

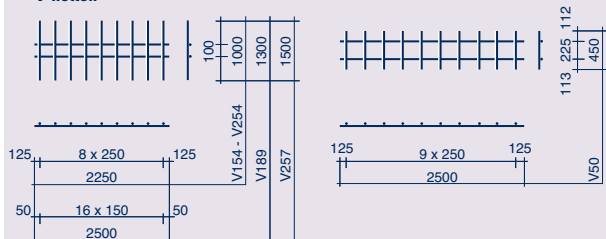
leveringsvoorwaarden: NEN 6008

toleranties: NEN 6008

#### stek-netten

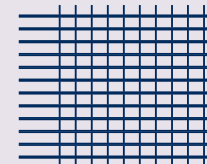


#### V-netten



## stek-netten

### V-netten



| merk    | A<br>mm <sup>2</sup> /m | G<br>kg/net | hoofdwap.<br>mm | verdeelwap.<br>mm | ℓ<br>mm | b<br>mm |
|---------|-------------------------|-------------|-----------------|-------------------|---------|---------|
| stek010 | 10                      | 13,7        | 6-400           | 10-150            | 2600    | 1200    |
| stek012 | 12                      | 21,2        | 7-500           | 12-150            | 2600    | 1300    |
| stek081 | 81                      | 7,52        | 5-450           | 8-150             | 2600    | 1000    |
| stek082 | 82                      | 7,52        | 5-50            | 8-150             | 2600    | 1000    |
| V50     | 50                      | 1,46        | 5-250           | 5-225             | 2500    | 450     |
| V154    | 154                     | 3,41        | 7-250           | 5-100             | 2250    | 1000    |
| V189    | 189                     | 5,68        | 6-150           | 5-100             | 2500    | 1300    |
| V254    | 254                     | 5,49        | 9-250           | 6-100             | 2250    | 1000    |
| V257    | 257                     | 8,47        | 7-150           | 5-100             | 2500    | 1500    |